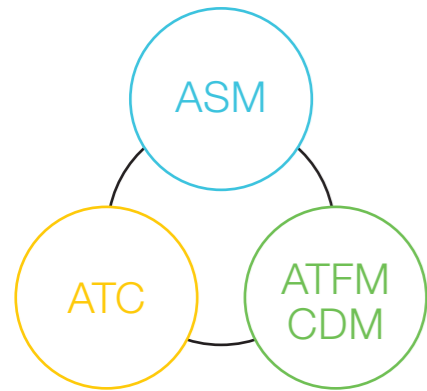




About Us



Air Traffic Management

For more than 40 years, NTT DATA have been working with the Japan Civil Aviation Bureau (JCAB) to provide systems in the ASM, ATC, and ATFM/CDM fields.

To flexibly meet the changing needs of world aviation, product sales, services, systems integration, etc. and to promote overseas business more than ever, NTT DATA's aviation product line up was combined into "airpalette", our new NTT DATA brand.

Product Line Up of "airpalette"



Installation

We provide full installation support from consultation to user support.



consulting



customization



user support

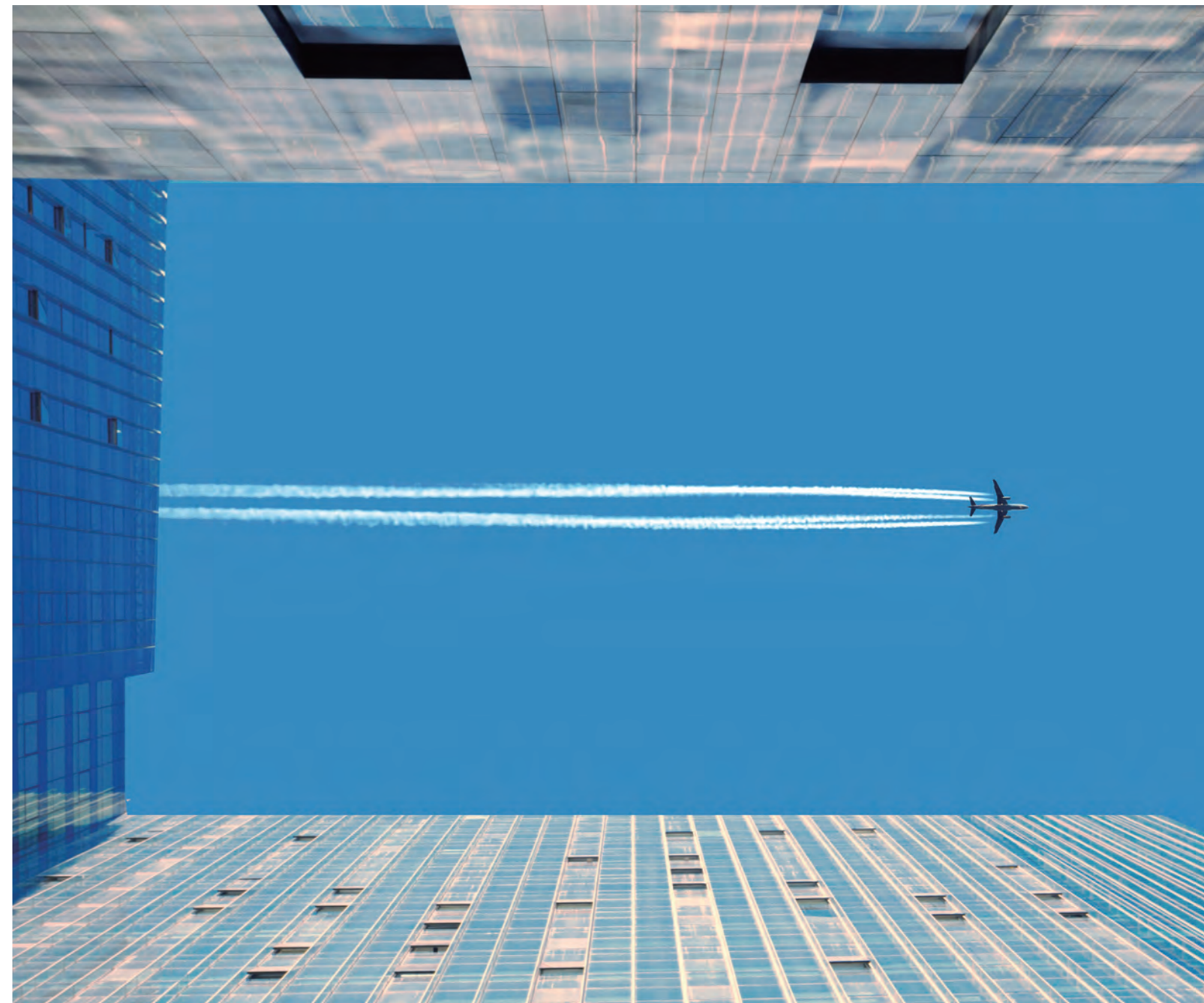
NTT DATA Corporation

www.airpalette.net
info@airpalette.net

"airpalette" is a trademark of NTT DATA Corporation.



airpalette eTOD



airpalette eTOD

airpalette eTOD (Electronic Terrain & Obstacle Data) Solution is terrain / obstacle data provision service bringing together US company DigitalGlobe' s high resolution satellite imagery, Japan Aerospace Exploration Agency' s (hereafter JAXA) 3D terrain data covering the whole world, and NTT DATA' s 3D spatial information management technology. With this, it will be possible to simply use one of the world' s latest and most detailed terrain / obstacle data, and improve accuracy and efficiency of flight path obstacle verification in flight rule design operations, and other applications in aviation domain.

airpalette eTOD is an elevation vector dataset for all significant natural or man-made obstacles around an airport to support Performance Based Navigation (PBN) Procedure Design. The dataset is consisted on three data: Terrain data, Obstacle data and Satellite Imagery.

Why satellite?

Low Intrusiveness



The data capturing is handled with the minimum impact on flight operations, avoiding traffic disruptions or airspace closures at airports.

Availability



Rich satellite image archive and new image acquisition capability worldwide. Capable of covering large area at once.

Regulatory Compliance



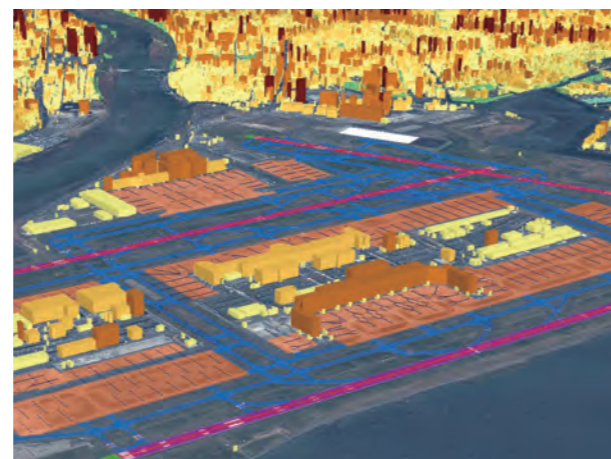
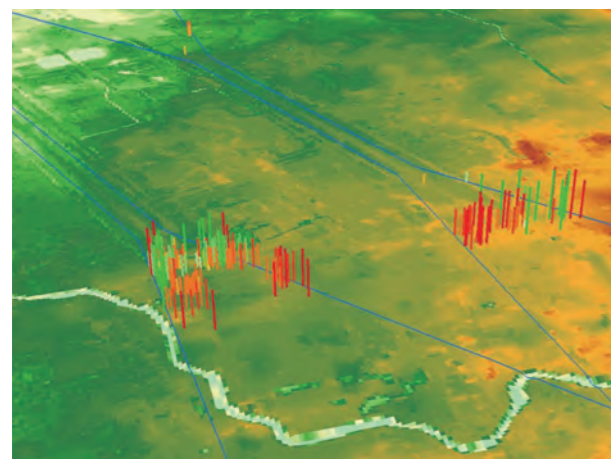
Satellite technologies are now fully compliant to resolution, accuracy and integrity of the data.

Save Time

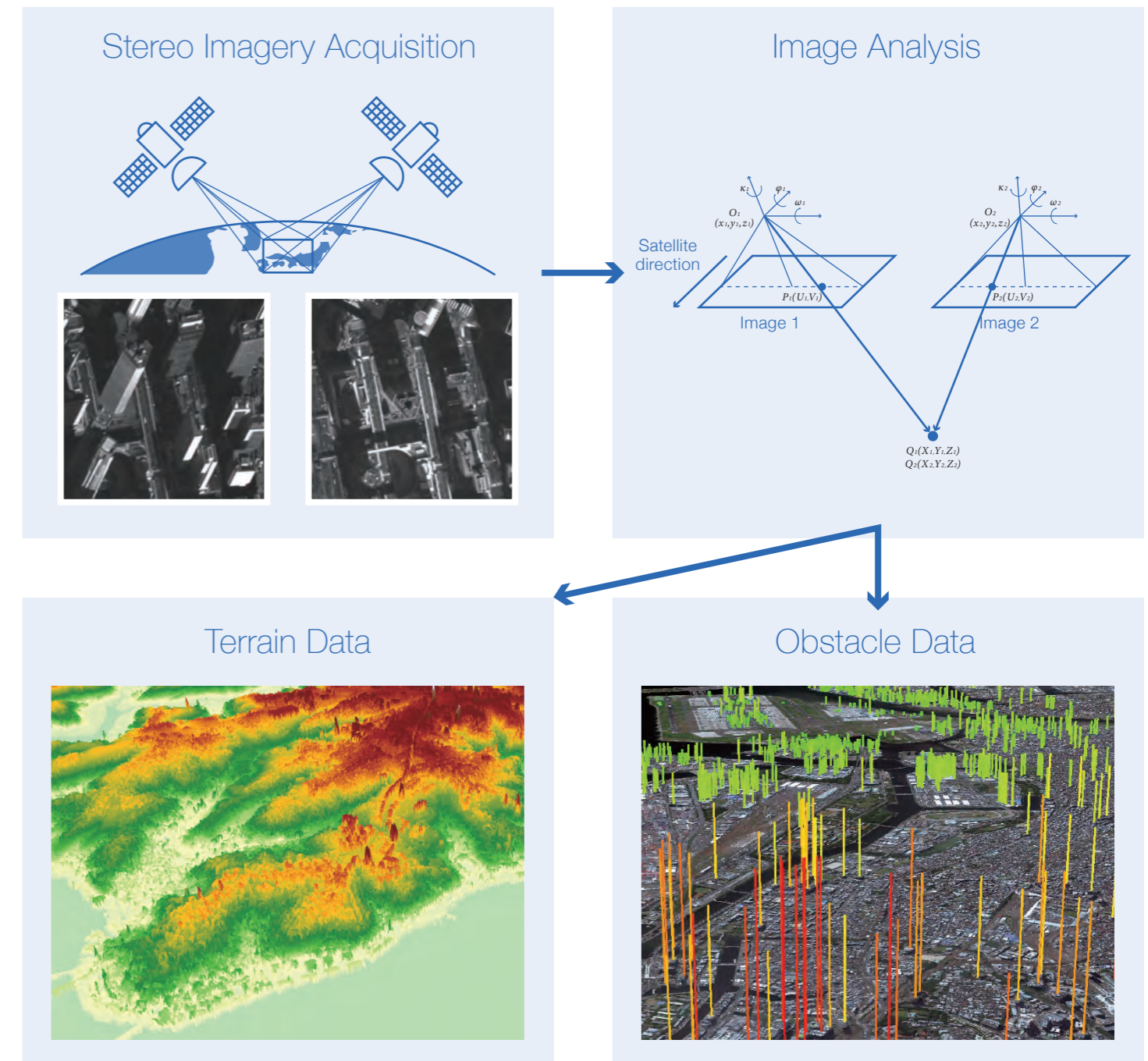


eTOD creation with satellite image is expected to save time.

Images of airpalette eTOD



eTOD creation from satellite imagery



Product Description

Deliverables

- Terrain data
- Obstacle data

Format

- GeoTIFF (Terrain data)
- ESRI Shapefile (Obstacle data)